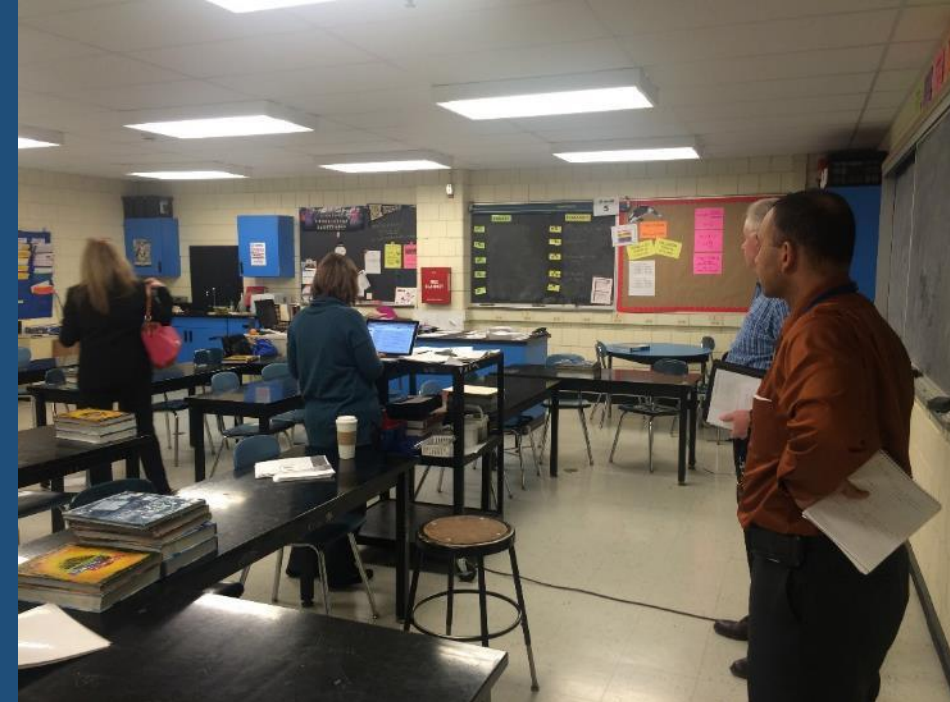




Boston Public Schools

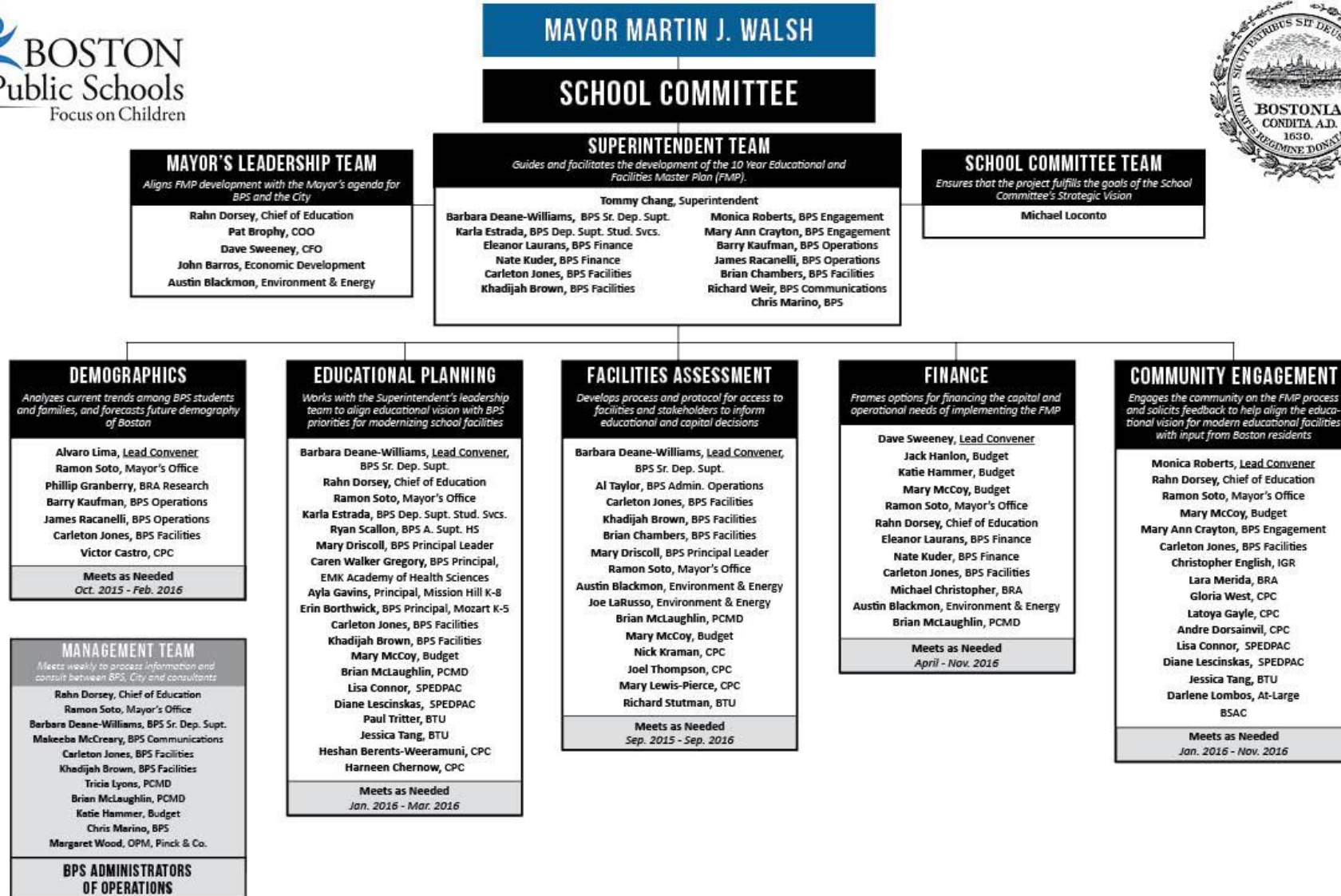
*10 Year Educational
and Facility Master Plan*

*Community Engagement
Meeting 06.04.16*



Demographics

Project Organization

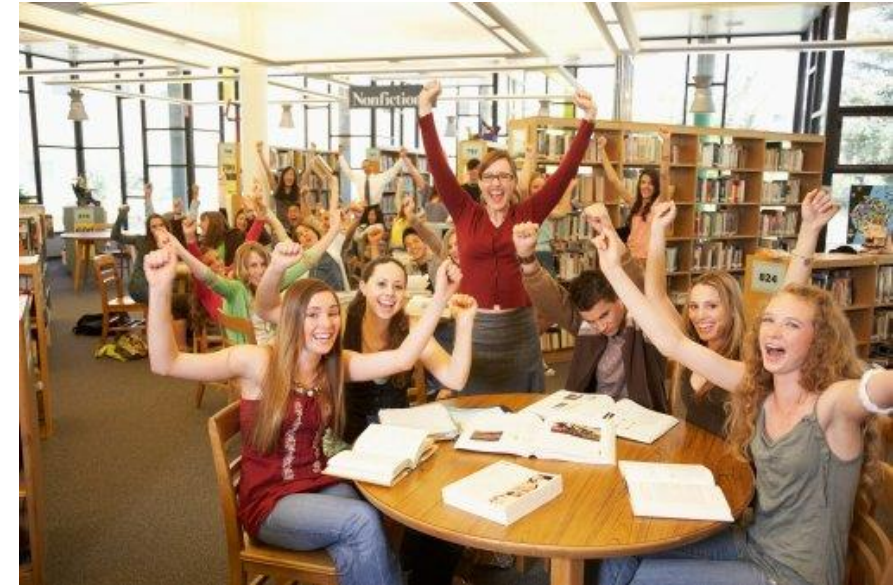


Key Accomplishments

DEMOGRAPHICS	EDUCATIONAL PLANNING	FACILITY ASSESSMENT	FINANCE	COMMUNITY ENGAGEMENT
<p>Reviewed BRA and BPS data</p> <p>Reviewed and commented on initial analysis</p>	<p>Reviewed key initiatives</p> <p>Met to share vision for educational areas including:</p> <ul style="list-style-type: none">Universal Design LearningGrade ConfigurationsFeeder patternsPre-KindergartenTechnologyLearning Commons <p>Future meetings:</p> <ul style="list-style-type: none">Special EducationPE, Athletics and FoodVocational Education	<p>Piloted initial assessment of 3 buildings</p> <p>Developed draft Assessment Tool</p> <p>Tested Assessment Tool on 19 buildings</p> <p>Coordinated and initiated assessment of 108 remaining buildings</p>	<p>Reviewing options for financing, including:</p> <ul style="list-style-type: none">BondsMassachusetts School Building Authority (MSBA)Dedicated revenuePublic/Private partnerships	<p>Developed and reviewed communication tools</p> <p>Developed survey for community input: http://bit.ly/1SJSBNm</p> <p>Planning public Advisory Committee update in June</p>

Enrollment Challenges

- Focus of Effort (present – 2025)
 - Reduce transitions, simplify grade configurations?
 - Increase equity between choices?
 - How do we Increase capacity for early childhood education?
- Gain a larger percentage of the school age population (2020 – 2030)
- Build capacity for future growth (2035 – and beyond)
- Build program models that lead to equity for all students
- Determine school numbers (ES, MS, HS) and locations



What we've learned in the early phases about:
BPS Grade Configurations: 19 total

GRADE CONFIGURATION	NUMBER OF SCHOOLS
K0-1	5
K0-4	1
K0-12	1
K-1	3
K-5	49
K-6	1
K-8	17
2-8	1
3-8	1
5-12	1

GRADE CONFIGURATION	NUMBER OF SCHOOLS
6-8	12
6-9	1
6-12	3
7-12	3
9-10	1
9-11	1
9-12	20
10-12	1
12+	2

What we've learned in the early phases about: Demographics and future school demand

Demographic Background and Comments

- Historical populations and enrollment trends
- Projections and factors influencing projections
- Considerations for building/maintaining enrollment

Demographic Analysis Process:

- Four methodologies analyzed
 1. Cohort
 2. Annual Percentage increase
 3. Linear Regression
 4. Students per household / Housing starts
- 10 year projections developed by grade level
- Grade band analysis produced (K-5, 6-8, 9-12)
- Factors that impact enrollment examined

Projections and factors influencing projections

- 10 years of declining enrollment in grades 5-8
- Increased program complexity has impacted building capacity and utilization
- Program location creates challenges for student and parent access
- District choice has created islands of success but also isolation
- Capacity schools challenged by student population inconsistency
- Charters continue to be a significant and competitive factor
- City of Boston growth is not reflected in BPS enrollment projections



Considerations for building/maintaining robust enrollment

- Options to gain/maintain a larger percentage of the school age population:
- Reduce transitions, simplify grade configurations
- Create program models that lead to equity for all students
- Increase capacity for early childhood education
- Provide capacity for future growth (2035 – and beyond)
- Determine school numbers (ES, MS, HS) and locations

Where are we in the process?

- August 2015: Undertook Pilot study of three schools
- Fall 2015: Meetings of Demographics and Facility Assessment Advisory Committees began
- January 2016: Meetings of Education Planning and Community Engagement Advisory Committees began
- January through March 2016: SMMA piloted assessment process in 19 schools
- April 2016: Meetings of Finance Advisory Committee began
- April 2016: Assessments of remaining 108 buildings began.
- July 2016: Assessment data and Advisory Committee work will be assembled and analyzed
- August 2016: The Superintendent will hold a public event focused on the project
- September 2016: The assessments will be reviewed by School Site Councils
- September 2016: Options will be presented to the School Committee
- November 2016: School Committee will vote on the options.
- January 2017: Final report on Master Plan will be complete

Want to participate?

Engage social media at #BuildBPS

Get on the E-Newsletter mailing list

Take the survey at <http://bit.ly/1SJSBNm>

Attend community events

Thank you